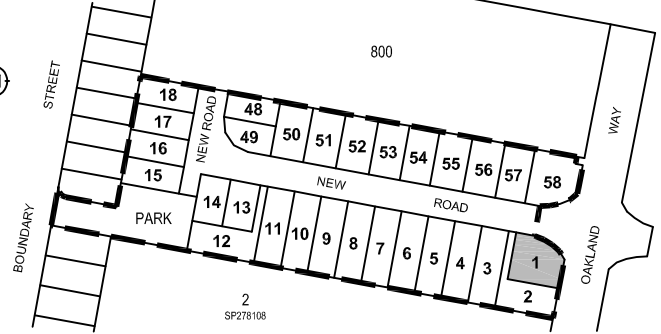


**NOTES**

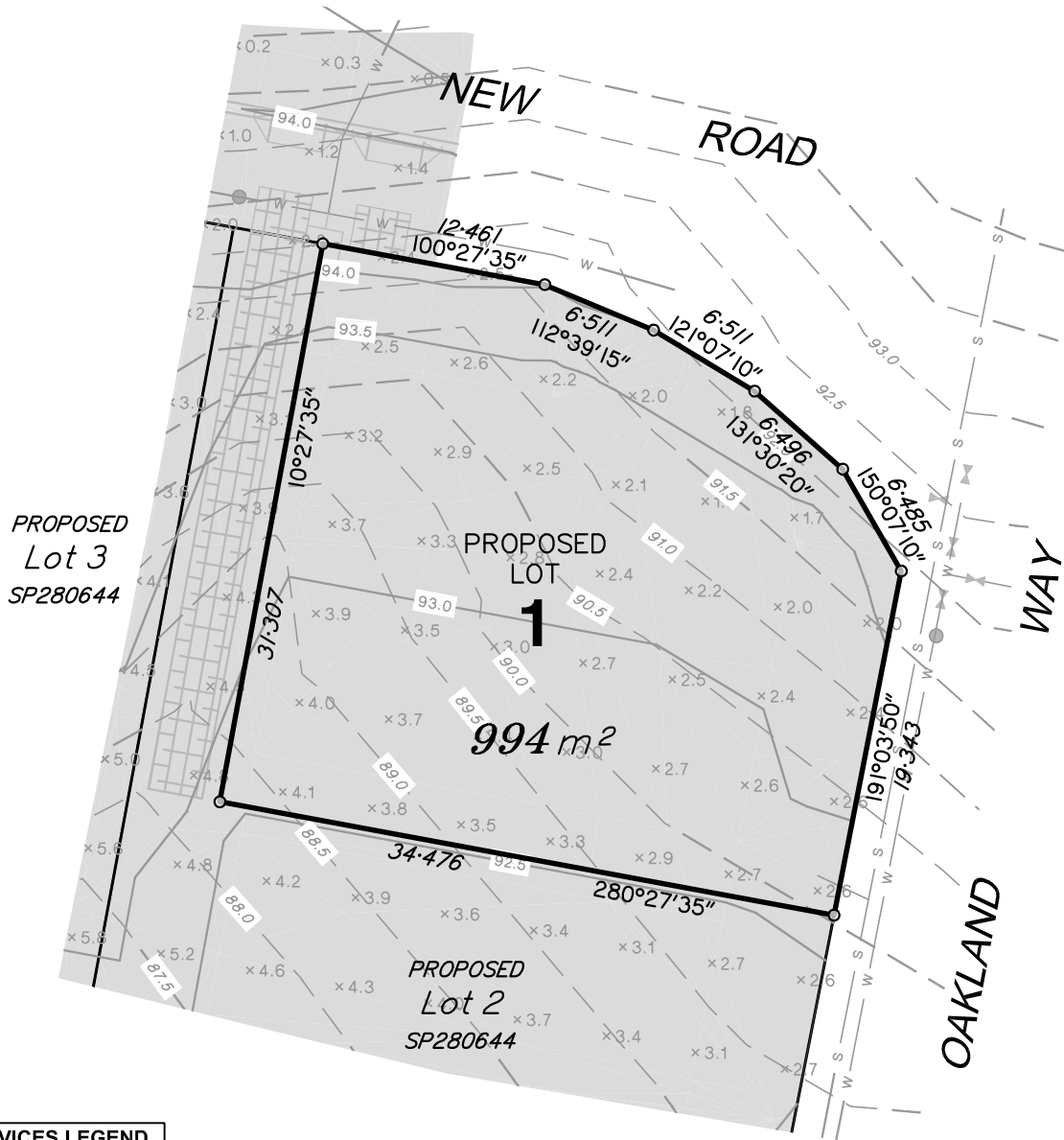
- This plan shows details of Proposed Lot 1 on Focus on Surveying Proposed Reconfiguration Plan SRD-301.06 Issue A, dated 13th April 2015, which accompanied a Subdivision Application and was approved by Scenic Rim Regional Council on the 26th May 2015 subject to conditions.
- Areas and dimensions are subject to final survey and plan registration.
- Natural surface contours have been derived from Earthwork Concept Plan Nos. 2013-02 R08 & R09 Rev D by Graham Marsh Consulting Engineers.
- Proposed Finished Surface Levels & contours have been derived from Earthwork Concept Plan Nos. 2013-02 R08 & R09 Rev D by Graham Marsh Consulting Engineers.
- Proposed Easement is for Services and Access to Services as applicable
- The compaction of the fill will be done in accordance with Australian Standard AS3798-2007. Level 1 inspection and testing will be carried out on fill over 0.5m.

**LOCALITY**

Scale 1:5000

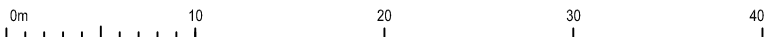


241  
SP278108



**DESIGN SERVICES LEGEND**

- S — Sewerage Line
- Sewerage Manhole
- SW — Stormwater Line
- Stormwater Manhole
- ⌘ Stormwater Gully Pit
- ⊙ Stormwater Field Pit
- W — Water Reticulation



**LEGEND**

- 20.0 --- Natural Contours
- 20.0 — Design Contours
- × 0.1 Depth of Fill
- Extent of Fill Area
- Retaining Wall



www.focussurvey.com.au  
 e info@focussurvey.com.au ph 07 3338 5095  
 a Suite 6, 214 Waterworks Road, Ashgrove . QLD . 4060

**DISCLOSURE PLAN FOR PROPOSED LOT 1**

**CURRENTLY DESCRIBED AS LOT 3 ON SP278108  
 PARISH OF BEAUDESERT COUNTY OF WARD  
 17A BOUNDARY STREET, BEAUDESERT**

AMENDMENTS		SHEET 1	SHEET SIZE
A Original Issue 13/11/2015		OF	A4
B Amend dwgs and add ems 21/12/2015		SHEETS 58	
CAD FILE		LEVEL DATUM	
SRD-301_DIS1A B.DWG		AHD	
SCALE		ORIGIN	
1:400		PM13385 (RL 71,414m)	
DATE	PLAN NO.	ISSUE	
21/12/2015	SRD-301_DIS_001	B	