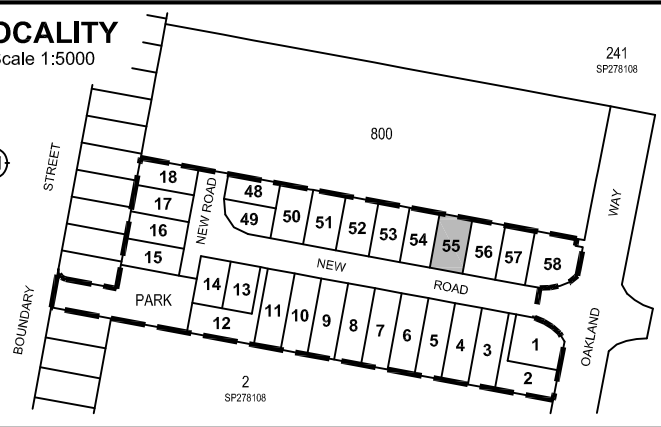


NOTES

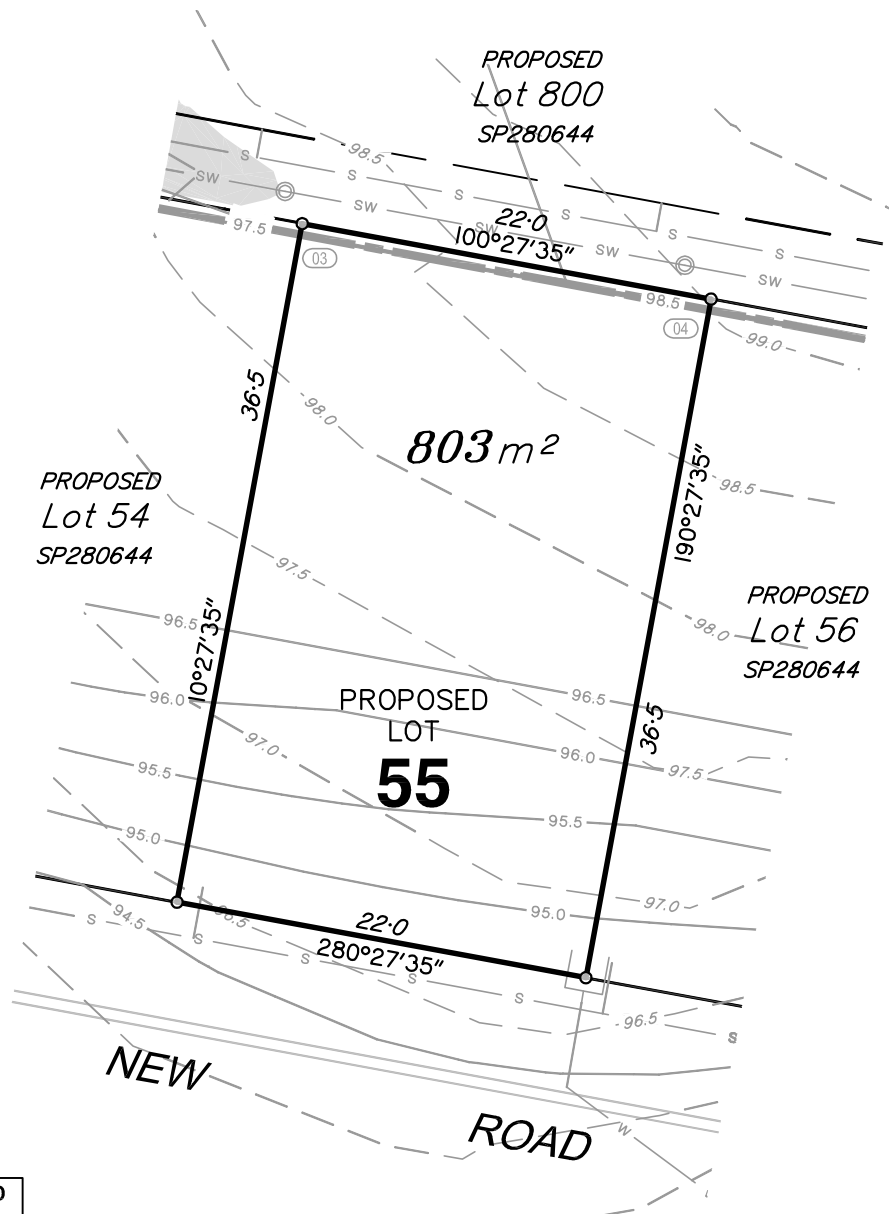
- This plan shows details of Proposed Lot 55 on Focus on Surveying Proposed Reconfiguration Plan SRD-301.06 Issue A, dated 13th April 2015, which accompanied a Subdivision Application and was approved by Scenic Rim Regional Council on the 26th May 2015 subject to conditions.
- Areas and dimensions are subject to final survey and plan registration.
- Natural surface contours have been derived from Earthwork Concept Plan Nos. 2013-02 R08 & R09 Rev D by Graham Marsh Consulting Engineers.
- Proposed Finished Surface Levels & contours have been derived from Earthwork Concept Plan Nos. 2013-02 R08 & R09 Rev D by Graham Marsh Consulting Engineers.
- Proposed Easement is for Services and Access to Services as applicable
- The compaction of the fill will be done in accordance with Australian Standard AS3798-2007. Level 1 inspection and testing will be carried out on fill over 0.5m.

LOCALITY

Scale 1:5000



241
SP278108

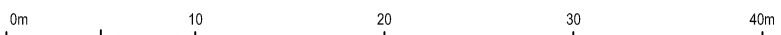


DESIGN SERVICES LEGEND

- S — Sewerage Line
- Sewerage Manhole
- SW — Stormwater Line
- Stormwater Manhole
- ⌘ Stormwater Gully Pit
- ⊙ Stormwater Field Pit
- W — Water Reticulation

RETAINING WALL HEIGHTS (m)

ID	RL Top	RL Toe	Ht	Avg Ht
03	98.1	96.9	1.2	1.5 (03 - 04)
04	98.7	96.9	1.8	



LEGEND

- 20.0 --- Natural Contours
- 20.0 — Design Contours
- × 0.1 Depth of Fill
- ▒ Extent of Fill Area
- Retaining Wall



www.focussurvey.com.au
 info@focussurvey.com.au ph 07 3338 5095
 Suite 6, 214 Waterworks Road, Ashgrove . QLD . 4060

DISCLOSURE PLAN FOR PROPOSED LOT 55

**CURRENTLY DESCRIBED AS LOT 3 ON SP278108
 PARISH OF BEAUDESERT COUNTY OF WARD
 17A BOUNDARY STREET, BEAUDESERT**

AMENDMENTS		SHEET 55	SHEET SIZE
A Original Issue 13/11/2015		OF	A4
B Amend dwgs and add emts 21/12/2015		SHEETS 58	
CAD FILE		LEVEL DATUM	
SRD-301_DIS1A B.DWG		AHD	
SCALE		ORIGIN	
1:400		PM13385 (RL 71.414m)	
DATE	PLAN NO.	ISSUE	
21/12/2015	SRD-301_DIS_055	B	